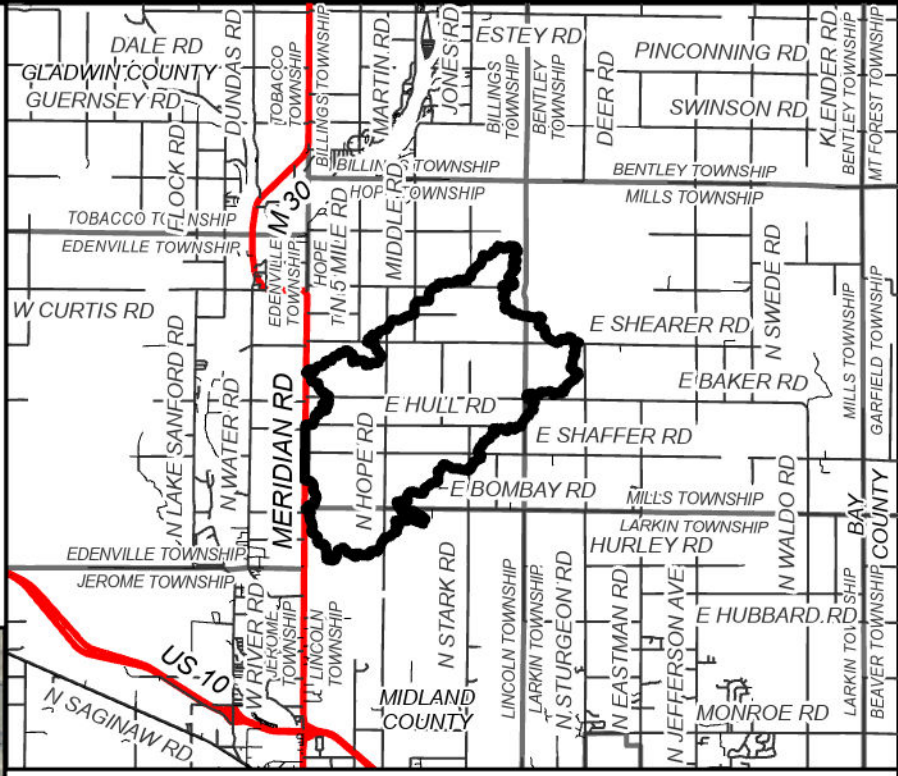
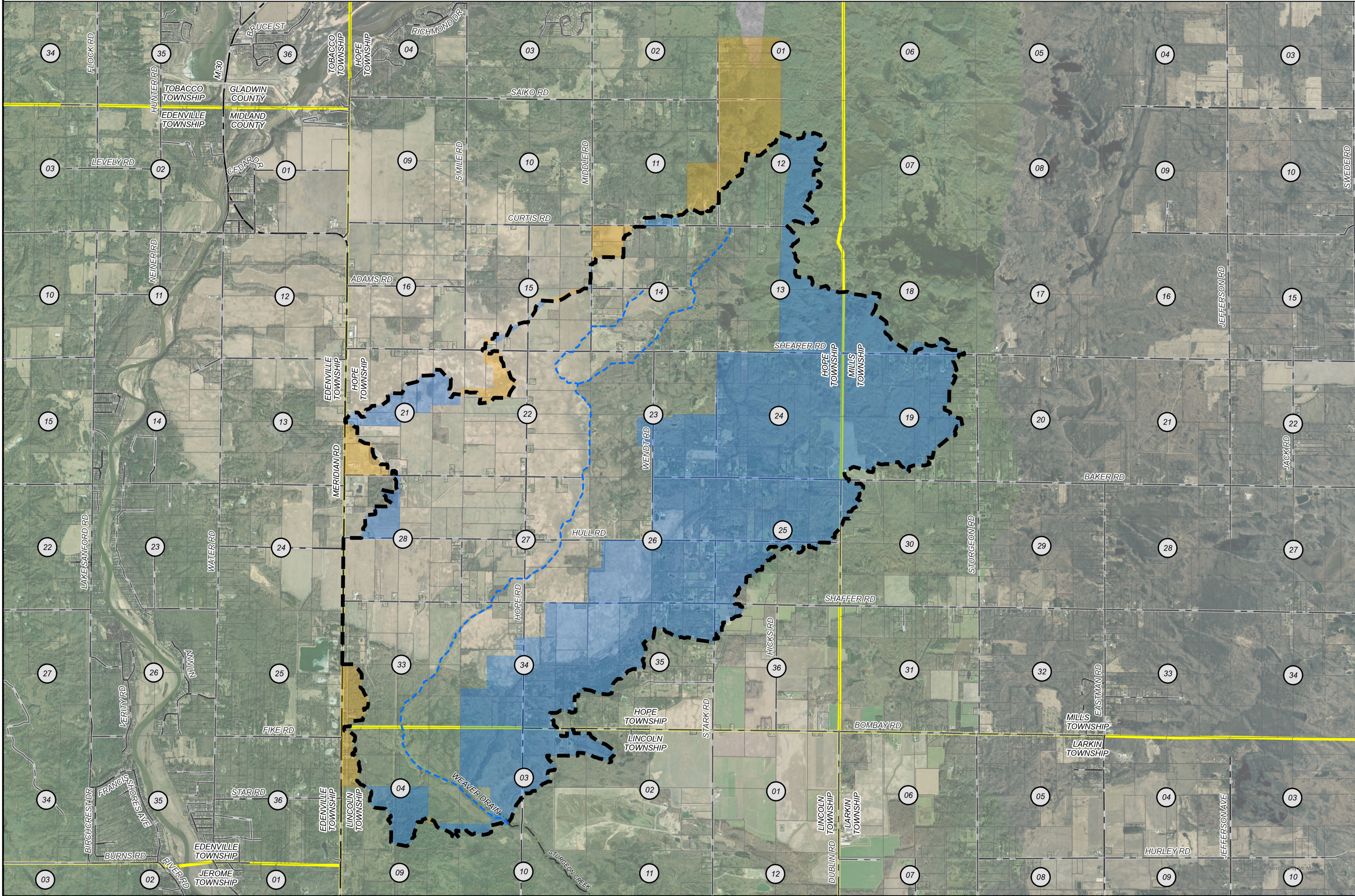


WEAVER DRAIN
MIDLAND COUNTY, MICHIGAN
MIDLAND COUNTY DRAIN COMMISSIONER - JOSEPH SOVA



AREA MAP
NOT TO SCALE

N

0 950 1,900 3,800 FEET

LEGEND

- DRAINAGE DISTRICT BOUNDARY
- - - APPROXIMATE DRAIN LOCATION
- - - APPROXIMATE LOCATION OF OUTLET WATERCOURSE
- LANDS ADDED
- LANDS REMOVED
- MUNICIPALITY BOUNDARIES
- PARCELS
- STATE ROADS
- COUNTY ROADS
- LOCAL ROADS
- RAILROAD
- # SECTION

DRAINAGE DISTRICT BREAKDOWN

MIDLAND COUNTY	
HOPE TOWNSHIP	7,460.81 AC.
LINCOLN TOWNSHIP	762.70 AC.
MILLS TOWNSHIP	636.52 AC.

TOTAL ACREAGE IN DISTRICT 8,860.04 AC.

LENGTH OF DRAIN
WEAVER DRAIN 42,298.61 FT.

BY	MARK	REVISIONS	DATE
THE WORK REPRESENTED BY THIS DRAWING WAS DESIGNED BY THE ENGINEER FOR THIS SPECIFIC APPLICATION AND SPECIFIC LOCATION DESCRIBED HEREIN IN ACCORDANCE WITH THE CONDITIONS PREVALENT AT THE TIME THE DESIGN WAS DONE. THE ENGINEER DOES NOT GUARANTEE AND WILL NOT BE LIABLE FOR ANY OTHER LOCATION, CONDITION, DESIGN OR PURPOSE.			
WEAVER DRAIN MIDLAND COUNTY, MICHIGAN			
DRAINAGE DISTRICT MAP			
DE. BY: LLG DR. BY: LLG		CH. BY: LDO APP. BY: LDO	PROJECT NO. 137529SG2024
STDS.		SHEET 1 OF 1	DR 1
DATE: MARCH 2025 SCALE: 1"=1,900'		FILE NO.	

SAGINAW'S OFFICE
230 S Washington Ave
Saginaw, MI 49807
Tel: 989-754-4747
www.SpicerGroup.com